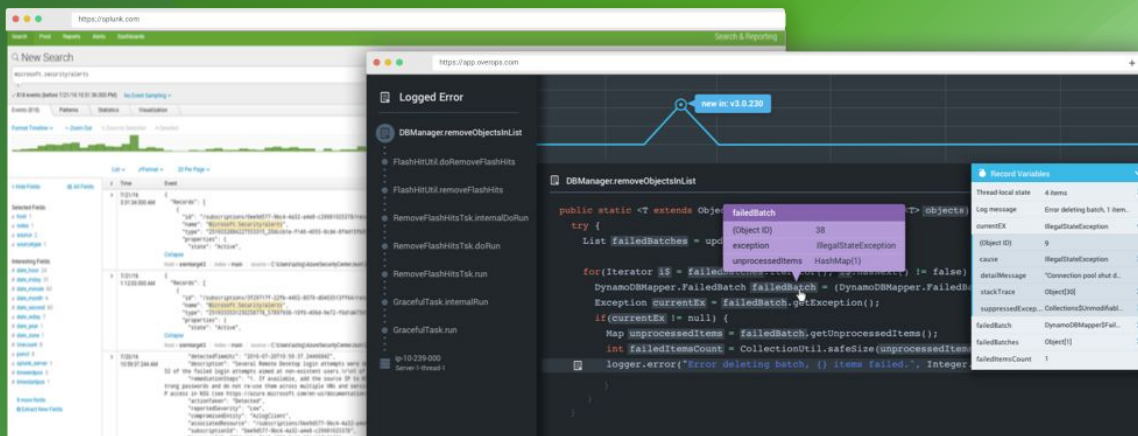


# OverOps + splunk®

## Get more value from your Splunk investment with OverOps.

Dive deeper than ever before to get the True Root Cause of performance degradation and slowdowns directly within your Splunk instance.



## Log Files Suck. Our Data is Different.

OverOps picks up where Splunk leaves off, analyzing application code at the JVM level to enhance log data from the moment of an event. With the OverOps and Splunk integration and Splunkbase app, links are inserted directly into your log files so that deep, code-level context can be surfaced and accessed during the troubleshooting process with just one click.



### Automated Timers

Capture a snapshot of the complete state of your code from the moment a slowdown or logged error occurs.



### Complete Environment & Variable State

Get the source code, variables, DEBUG logs and environment state for every bottleneck and exception – even uncaught and swallowed.

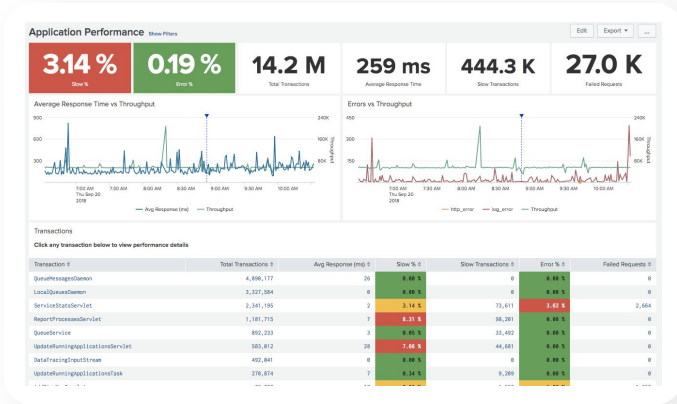


### Better Data for AIOps

Enhance Splunk IT Service Intelligence anomaly detection with OverOps' rich, code-level data.

# Supercharge Your Splunk Instance

OverOps goes beyond log files to capture code-level insights about every error and slowdown in your applications and services – even the ones you didn't see coming.

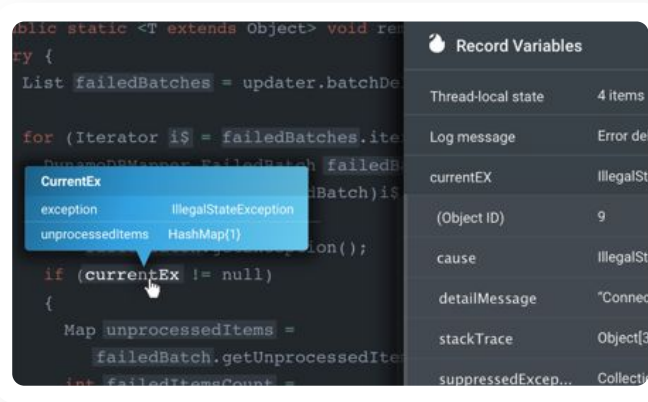
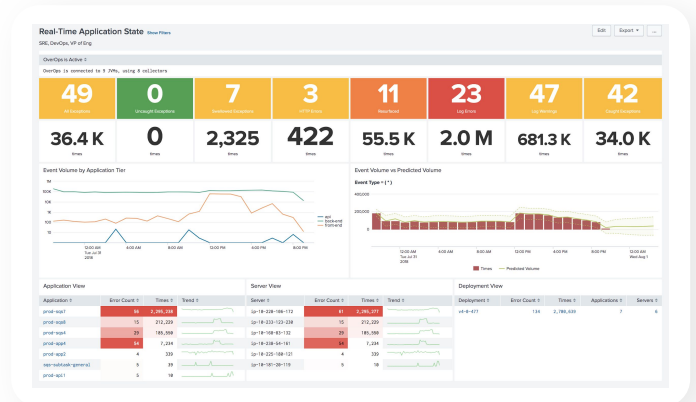


## Monitor Application Performance

OverOps automatically identifies entry points into your code and monitors performance so you can be made aware of slowdowns and bottlenecks. We've created an app in Splunkbase so you can surface these insights directly in Splunk.

## Gain Insight into the Quality of Every Release

OverOps gathers complete information about every error and exception in your application and can map these to a release or a build. Through direct integration with your Splunk metrics dashboards, we expose data about the quality of your deployments and help you prioritize critical issues.



## Get the True Root Cause in Just One Click

OverOps links in Splunk allow you to immediately access deep context about the root cause of every error and exception so you can spend more time building and less time troubleshooting. Our data includes the complete variable state, last 250 Log statements including DEBUG and INFO level, event analytics and more.