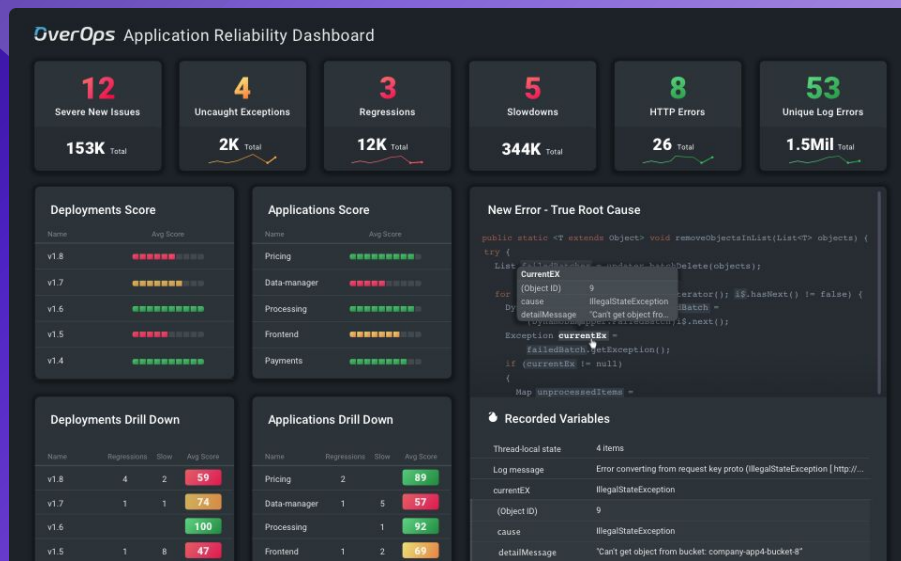


## OverOps Reliability Dashboards:

# Speed & Stability Across the SDLC

New OverOps Reliability Dashboards in Grafana enable QA, DevOps and SRE teams to automatically identify and prioritize anomalies in both pre-production and production, ensuring continuous application quality.



## The OverOps Scorecard Formula

OverOps Deployment Scores provide you with a quantifiable measure of the reliability for both individual releases as well as your overall application. By analyzing every new error, increasing error and slowdown, OverOps gives insight into reliability trends and lets you know when it's safe to promote code.



**Detect** all errors and slowdowns – even uncaught or hidden exceptions.



**Correlate** all events to their exact origin.

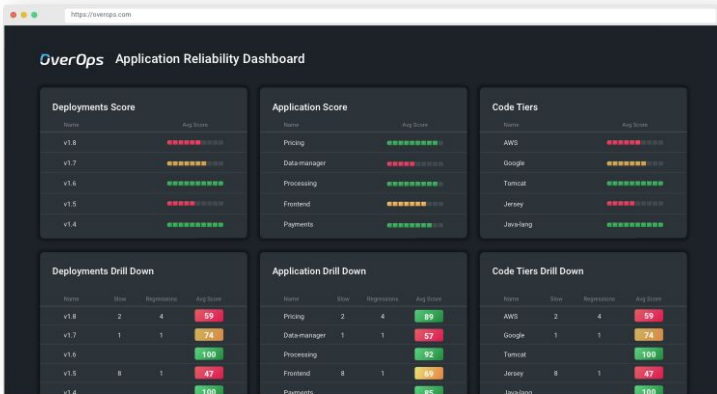


**Classify** each event according to its code location, tier, version and frequency.



**Prioritize** events with the highest severity and potential to impact reliability.

# Continuous Reliability, Delivered.

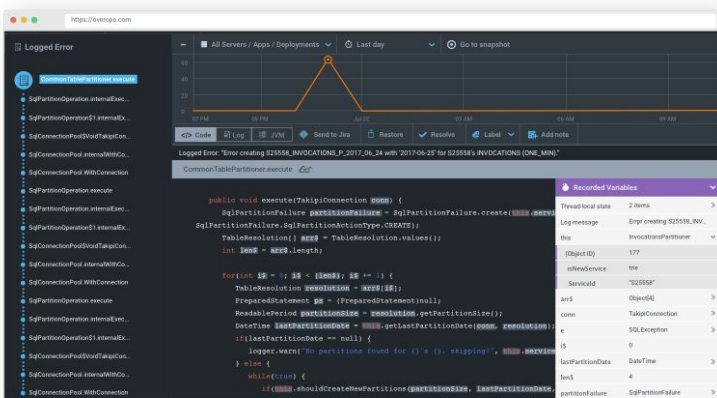
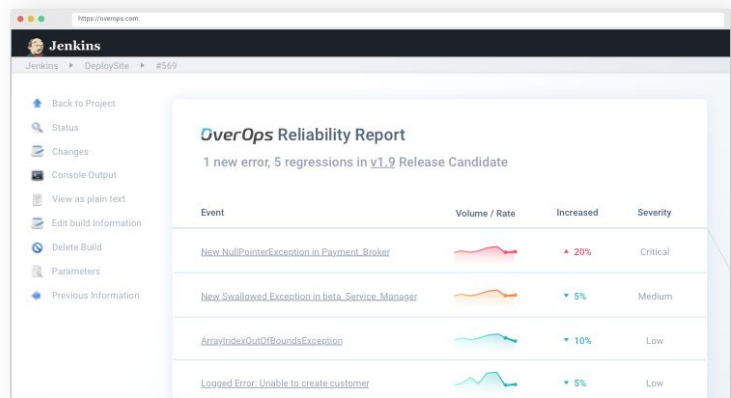


## Know the Quality of Every Release

- **Prioritize** every anomaly and slowdown based on their severity.
- **Score** every deployment, application and infrastructure tier.
- **Understand the reliability** of your applications at a glance.

## Never Promote Bad Code

- **Certify releases** based on their Reliability Score and their potential to impact the app.
- **Integrate with your CI/CD pipeline** to inform quality gates between stages, and automatically block a release.
- **Route issues back to the right developer** with complete context of where and why the error occurred.



## Drill Into the True Root Cause

- **Get a complete picture** of the code at the time an anomaly occurs.
- **View the source code**, variables, DEBUG logs and environment state for every bottleneck and exception.
- **Reproduce and fix** issues in pre-prod and production in seconds.

Visit [www.overops.com/product](http://www.overops.com/product) to learn more.